

## ***Panjange nigrifrons* Deeleman-Reinhold & Deeleman, 1983**

**Deeleman-Reinhold, C. L., Deeleman, P. R. 1983.** Studies on tropical Pholcidae I. *Panjange*, a new genus of Indo-Australian leaf- and rock-dwelling pholcid spiders (Araneae). Zool. Medelel. 57(14): 121-130.

p. 126

### ***Panjange nigrifrons* nov. spec. (figs. 10-16)**

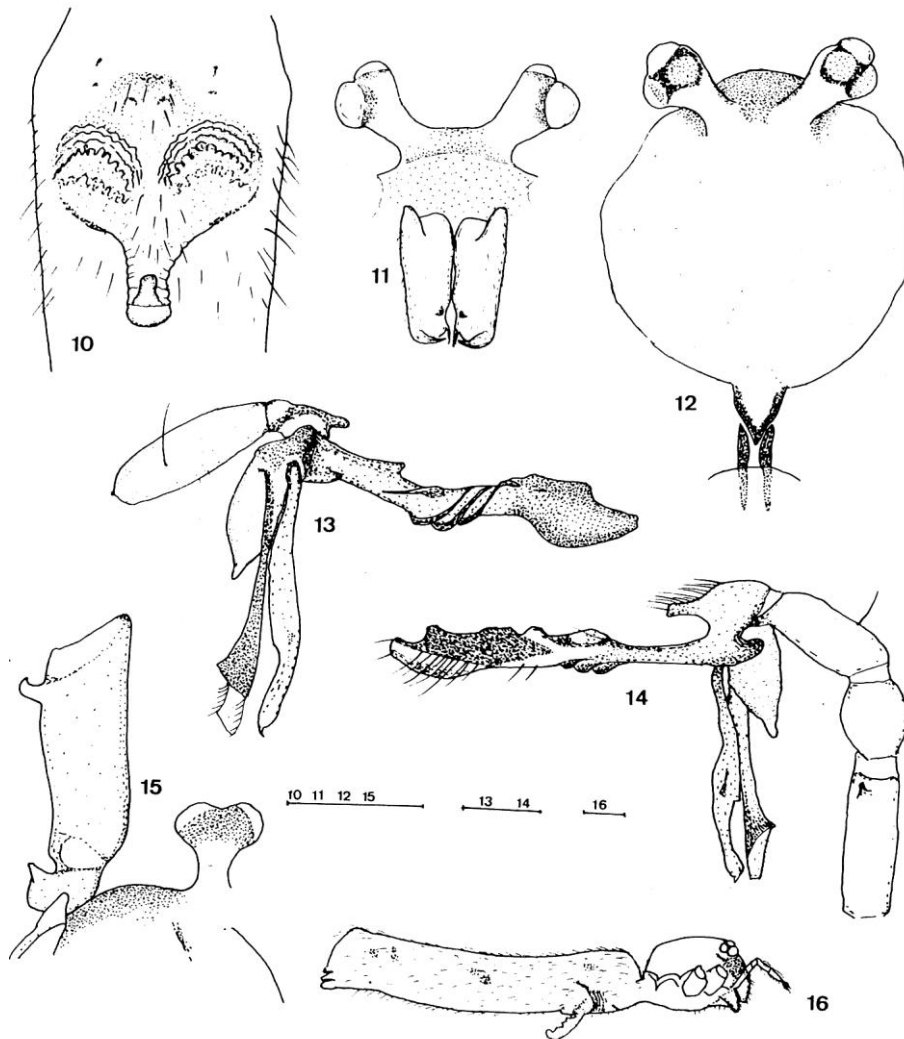
Material examined. — Indonesia: East Kalimantan, Sepaku, 40 km N of Balikpapan, degraded primary lowland forest: ♀ holotype, 1 ♂ paratype, on the underside of large, hairy leaves, 1-2 m above the ground at the edge of the forest; leg. P. R. Deeleman, 16.vii.1979, in RMNH. 2 ♀ paratypes, id., 4.viii.1980, in Coll. Deeleman. East Kalimantan, Makunjung, on Sungai Barito, 15 km N of Muratewe, 0°54'S, 114°55'E, 1 ♂, paratype, 1 ♀ paratype; leg. J. R. Thomson, 21.iv.1976, in Burke Museum, Seattle.

Description. — Cephalothorax yellow to white except the clypeus dark brown; chelicerae brown with light sides; abdomen white but for a few round, pale grey spots. Carapace in the ♀ holotype 1.20 mm long and 1.15 mm wide; in the ♂ paratype 1.30 mm long and 1.18 mm wide. Carapace (figs. 12, 16) dorsally flat, a pair of lateral grooves on either side of the eye groups, no median groove. Distance between the eye groups 1.5 times the diameter of PME in the ♀; in the ♂, eyes on diverging stalks (figs. 11, 15). Clypeus nearly vertical in the ♀, slightly slanting in the ♂. Male chelicerae baso-laterally with a blunt conical apophysis and near the distal-mesal margin a small, semicircular apophysis which is divided into a wide-based blunt tooth, orientated longitudinally and a smaller one perpendicular to it. Abdomen (fig. 16) cylindrical, in profile distally somewhat excised, 3.5 times as long as carapace.

Leg measurements (in mm):

♀ holotype						
	Fe	Pa	Ti	M	T	Total
I	8.35	0.50	8.16	16.50	2.73	36.24
II	5.76	0.48	5.28	9.30	1.72	22.54
III	4.08	0.43	3.36	6.10	0.86	14.83
IV	6.50	0.50	6.00	8.90	1.34	23.24
palp	2.74	1.37	1.70		2.26	8.07
♂ paratype						
I	10.56	0.50	10.40	18.72	2.63	42.81
II	7.00	0.48	6.50	11.10	1.63	26.71
III	4.90	0.40	3.90	6.45	0.81	16.46
IV	6.72	0.50	4.90	8.60	1.40	22.12

Male palp (figs. 13, 14). — Trochanter with small pointed apophysis. Femur (fig. 15) cylindrical, slightly widening distally, on two-thirds of its length a small hook-shaped apophysis; patella cylindrical; tibia not enlarged. Tarsus proper on-



Figs. 10-16. *Panjange nigrifrons* nov. spec. 10, ♀, genital organ, ventral view; 11, ♂, head and chelicerae, anterior view; 12, ♂, carapace, dorsal view; 13, 14, ♀, left palp, mesal and lateral view; 15, ♂, trochanter and femur of palp, cheliceral basis and right eye, lateral view; 16, ♀, lateral view. Scales 0.5 mm.

ly a little lengthened, with narrow, obtuse tip. Tarsal appendage long and nearly straight, in the middle encircled by three parallel sharp ridges, distally widening into a pointed blade; a zone between these portions unsclerotized, flexible. Bulb distally pointed, from its base arising a long thin embolus and a lanceolate apophysis, bearing a claw distally.

Female genital organ (figs. 10, 16). — Epigyneal lip divided up into a larger basal part, which is composed of two semicircular wrinkled areas marked with reddish lines, laterally continuing as the abdominal epidermis, and a strongly extensible median projection, provided on its extremity with a replicate tongue. Internal valves occupying only a small part of the width of the bursa; the bursal opening narrow.

**Huber, B. A. 2011.** Revision and cladistic analysis of *Pholcus* and closely related taxa (Araneae, Pholcidae). Bonner zool. Monographien 58: 1-510.

p. 109



FIG. 435. Known distribution of *Panjange*.

p. 110

*Pa. nigrifrons* group: *Pa. nigrifrons* Deeleman-Reinhold & Deeleman, 1983; *Pa. iban* n. sp.; *Pa. bako* n. sp.; *Pa. sedgwicki* Deeleman-Reinhold & Platnick, 1986.