

***Panjange hamiguitan* Huber, 2015**

Huber BA, Nuñeza OM. 2015. Evolution of genital asymmetry, exaggerated eye stalks, and extreme palpal elongation in *Panjange* spiders (Araneae: Pholcidae). *European Journal of Taxonomy* 169: 1-46.

p. 10

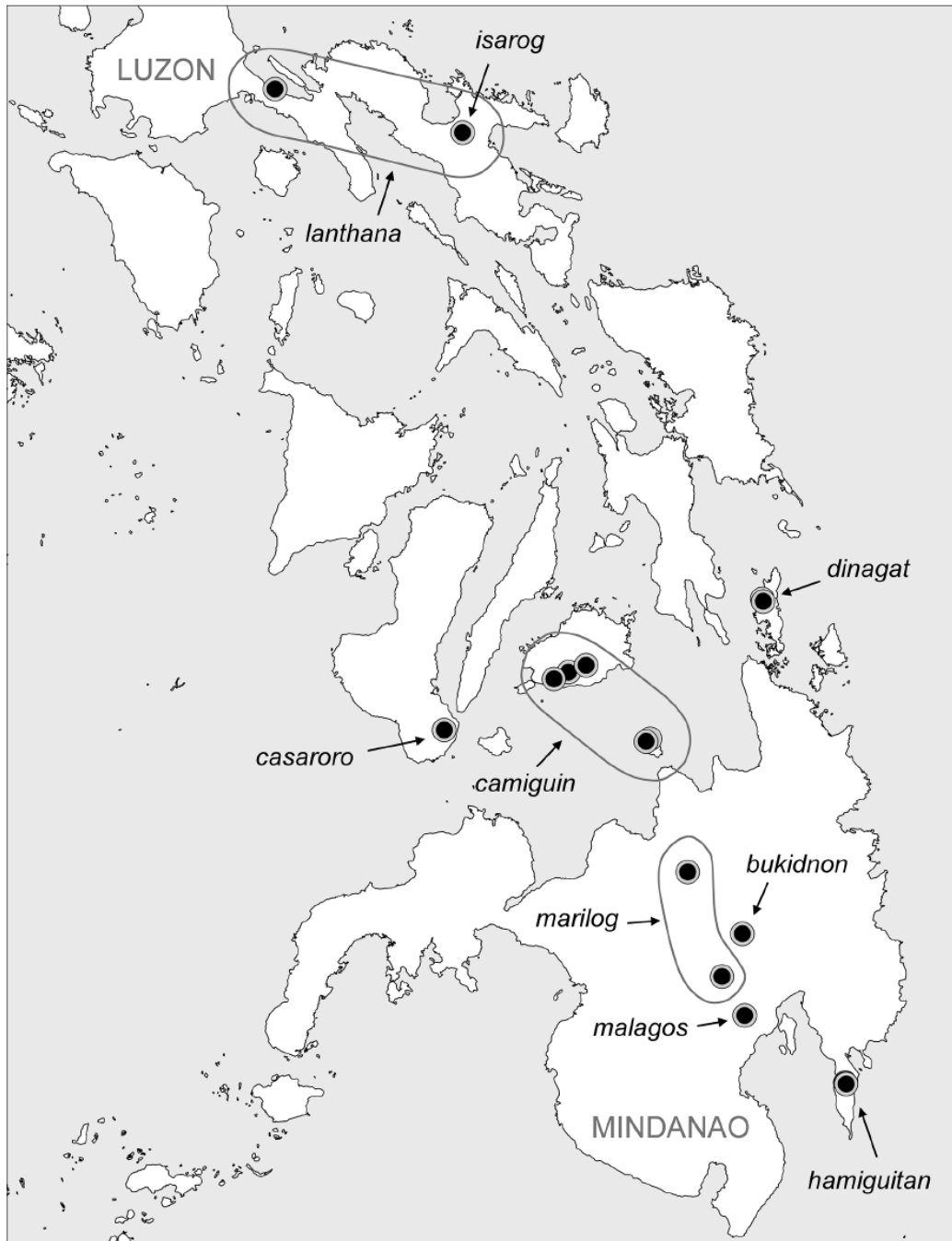


Fig. 16. Known distribution of the *Panjange lanthana* group.

Panjange hamiguitan Huber sp. nov.

[urn:lsid:zoobank.org:act:C44C7291-5943-45C1-AAC1-F6B684836BBD](https://zoobank.org/urn:lsid:zoobank.org:act:C44C7291-5943-45C1-AAC1-F6B684836BBD)

Figs 64–68

Diagnosis

Easily distinguished from known congeners by extremely elongated male palpal elements and female epigynal scape (Figs 64–65, 67).

Etymology

The species name is derived from the type locality; noun in apposition.

Type material

PHILIPPINES: holotype ♂, in ZFMK (Ar 13009), Mindanao, Davao Oriental, Mount Hamiguitan Wildlife Sanctuary (access Governor Generoso), “site 1” (9.6463°N, 126.1442°E), 250 m a.s.l., 12 Feb. 2015 (M.A. Responde).

Other material examined

PHILIPPINES, Mindanao, Davao Oriental: 1 ♀, 2 juvs in ZFMK (Ar 13010) and 1 ♀ in MSU-IIT, same data as holotype; 1 ♀, 1 juv. in ZFMK (Ar 13011), Mount Hamiguitan Wildlife Sanctuary (access Governor Generoso), “site 2” (9.6497°N, 126.1487°E), 360 m a.s.l., 13 Feb. 2015 (M.A. Responde); 1 ♀, 1 juv. in ZFMK (Ar 13012), Mount Hamiguitan Wildlife Sanctuary (access Governor Generoso), “site 3” (9.6569°N, 126.1559°E), 580 m a.s.l., 13 Feb. 2015 (M.A. Responde).

Description

Male (holotype)

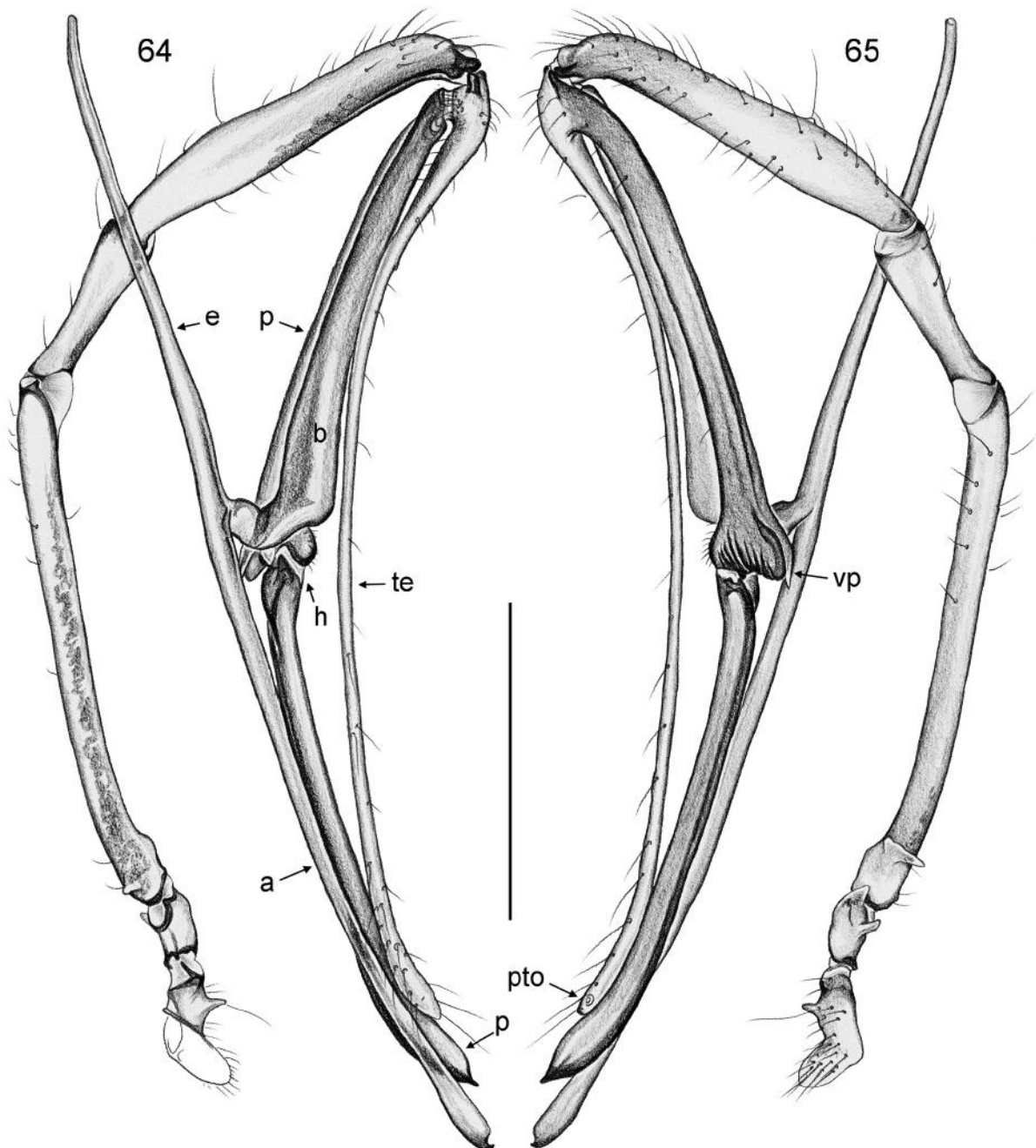
MEASUREMENTS. Total body length 5.1, carapace width 0.9. Leg 1: ~33.3 (7.9 + 0.4 + 7.8 + 15.7 + ~1.5), tibia 2: 4.9, tibia 3: 2.8, tibia 4: 4.3; tibia 1 L/d: 99. Distance PME–PME 195 µm, diameter PME 95 µm, distance PME–ALE ~60 µm; AME absent.

COLOR. Carapace pale ochre-yellow with pair of light brown marks, ocular area dark brown, with black marks in place of AME, clypeus pale ochre to whitish; sternum whitish; legs pale ochre-yellow with dark brown patellae and tibia-metatarsus joints; abdomen pale gray, with many black marks dorsally and laterally; ventrally with pair of small dark marks near book-lung covers.

BODY. Habitus similar to *Pa. casaroro* Huber sp. nov. and *Pa. camiguin* Huber sp. nov. (cf. Figs 6, 9); ocular area raised, triads on additional stalks with further weakly sclerotized distal processes directed toward each other (Fig. 66); carapace without median furrow; clypeus unmodified; sternum wider than long (0.56/0.46), unmodified.

CHELICERAE. As in Fig. 66, with pair of simple, weakly sclerotized frontal processes slightly directed upwards, without modified hairs; without stridulatory ridges.

PALPS. As in Figs 64–65; all elements symmetrical; all elements distal of trochanter extremely elongated; coxa with distinct ventral apophysis; trochanter with two weakly sclerotized retrolateral processes; femur with weakly sclerotized bifid retrolateral process proximally; tarsus with extremely slender elongation,



Figs 64–65. *Panjange hamiguitan* Huber sp. nov. (ZFMK, Ar 13009), left male palp, prolateral and retrolateral views. Abbreviations: a = appendix; b = genital bulb; e = embolus; h = hinge; p = procursus; pto = palpal tarsal organ; te = tarsal elongation; vp = ventral process. Scale bar = 1 mm.

with tarsal organ near tip; procursus consisting of two hinged parts; proximal part distally widened, with small pointed ventral process; distal part very simple; bulb very thin and long, with long processes extending in opposite directions (dorsal embolus; ventral appendix).

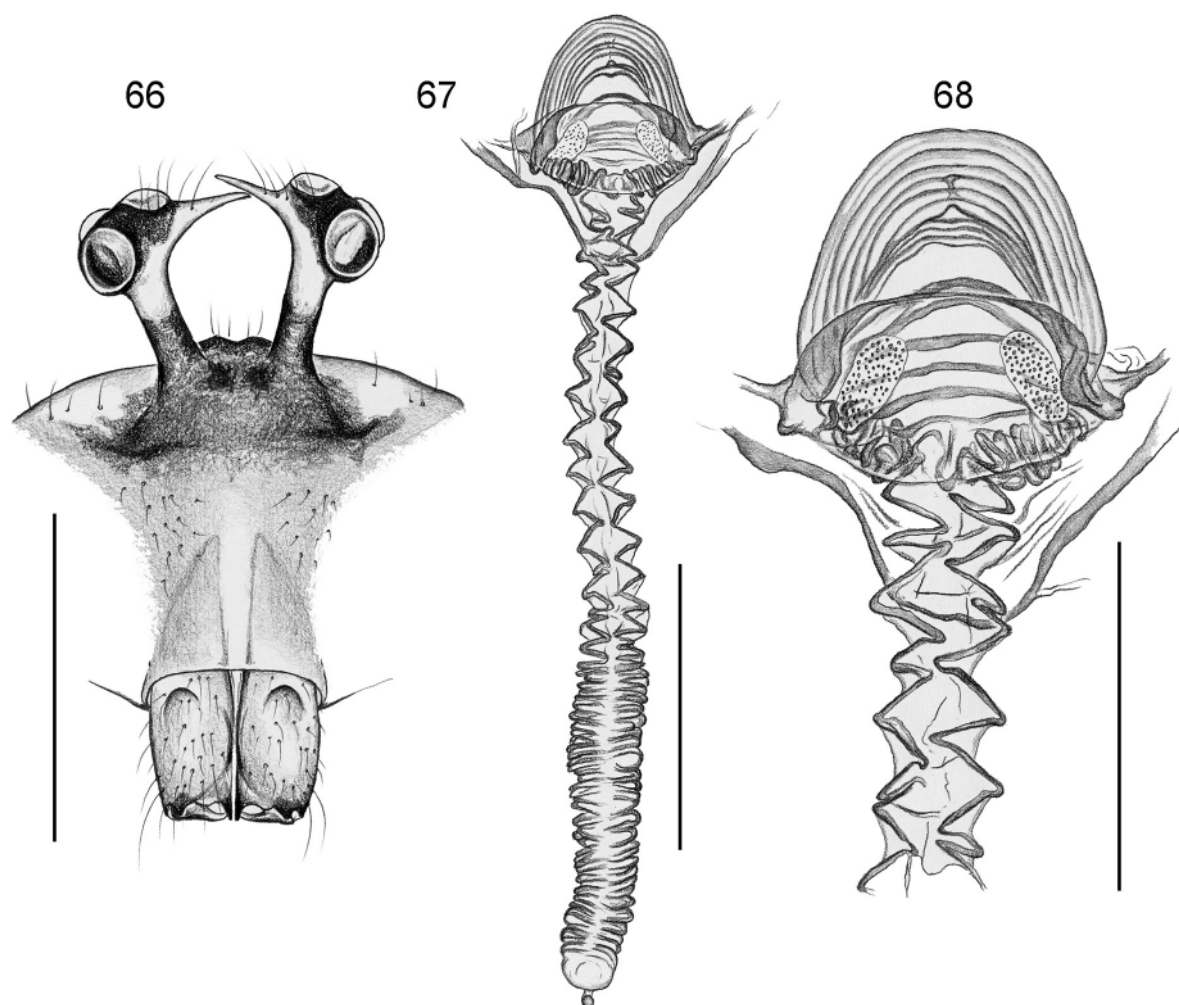
LEGS. Without spines and curved hairs; few vertical hairs; retrolateral trichobothrium on tibia 1 at 3%; prolateral trichobothrium absent on tibia 1, present on other tibiae.

Female

In general similar to male but eye triads on low humps, ocular area with narrow transversal dark mark including black marks in place of AME. Tibia 1: 6.8 (missing in other females). Epigynum pale, weakly sclerotized, with very long strongly folded and extensible scape (Fig. 67); internal genitalia as in Fig. 68.

Distribution

Known from type locality on Mindanao only (Fig. 16).



Figs 66–68. *Panjange hamiguitan* Huber sp. nov. (ZFMK, Ar 13009, 13012). **66.** Male prosoma and chelicerae, frontal view. **67.** Cleared female genitalia, dorsal view (proximal part of scape partly extended). **68.** Detail of Fig. 67. Scale bars: 66–67 = 0.5 mm; 68 = 0.3 mm.