

***Panjange cavicola* Deeleman-Reinhold & Deeleman, 1983**

Deeleman-Reinhold, C. L., Deeleman, P. R. 1983. Studies on tropical Pholcidae I. *Panjange*, a new genus of Indo-Australian leaf- and rock-dwelling pholcid spiders (Araneae). Zool. Mededel. 57(14): 121-130.

p. 128

***Panjange cavicola* nov. spec. (figs. 17-21)**

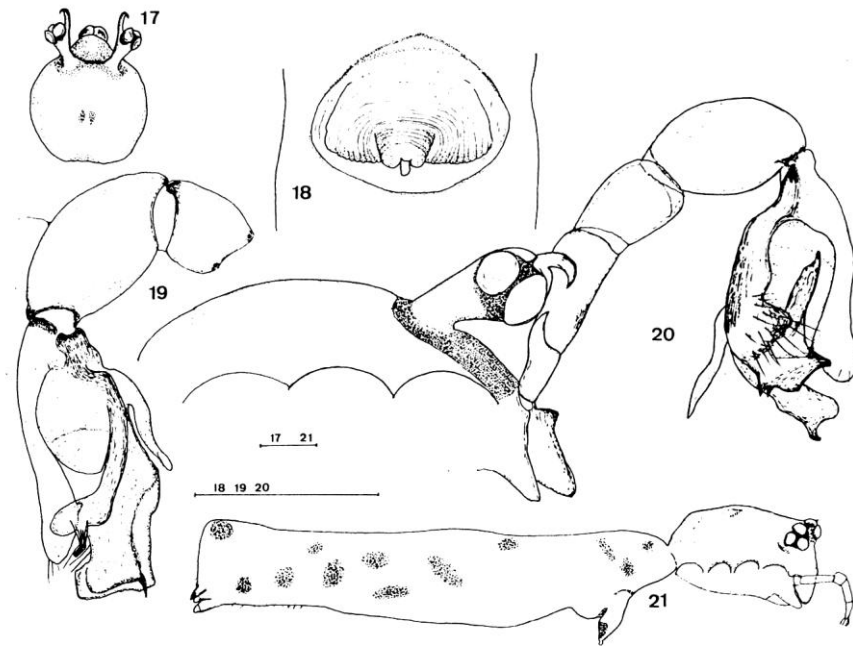
Material examined. — Indonesia: Sulawesi, between Ujung Pandang and Camba, about 23 km from the latter, in forest on karst: ♀ holotype, 1 ♀ and 1 ♂ paratype on overhanging rock and on ceiling of cave entrance; holotype leg. P. R. & C. L. Deeleman, 13.viii.1980; paratypes, id., 9.viii.1980. Holotype and ♂ paratype in RMNH, ♀ paratype in Coll. Deeleman.

Description. — Cephalothorax pale yellow, an ochre band connecting the eye groups and extending on either side of the eyes, between the eyes on the band a W-shaped black mark, in the middle of the carapace a reversed V in ochre; clypeus and chelicerae with ochre streaks; abdomen white, interspersed with round and oval spots. Carapace in both ♀ 1.20 mm long and 1.10 mm wide, in the ♂ 1.15 mm long and 1.10 mm wide. No groove or striae, in profile sloping down abruptly behind (fig. 21). Distance between the eye groups in the ♀ scarcely two diameters of PME, in the ♂ eye groups on top of long, forward directed stalks, which are mesally prolonged into curved spikes (figs. 17, 20); in the ♀ anterior margin of PME with small excrescence in the middle. Clypeus nearly vertical in the ♀, slanting in the ♂. Chelicerae in the ♂ basally with a low lateral cone, the apex of which points mesally; distal apophysis lacking. Abdomen in profile rectangular (fig. 21), 3.5 times as long as carapace in the holotype, 3 times in the paratypes.

Leg measurements (in mm):

♀ holotype						
	Fe	Pa	Ti	M	T	Total
I	9.80	0.50	10.08	20.65	2.16	43.19
II	6.50	0.50	6.00	10.32	1.14	24.46
III	4.60	0.45	3.36	6.76	0.63	15.80
IV	6.72	0.50	4.90	9.34	1.20	22.66
palp	2.10	1.24	1.37		1.72	6.43
♂ paratype						
I	missing					
II	9.90	0.50	8.45	13.44	1.20	33.49
III	5.50	0.45	4.80	7.44	0.67	18.86
IV	7.80	0.50	7.20	11.52	1.20	28.22

Male palp (figs. 19, 20). — Trochanter longer than wide, apical margin with lateral apophysis. Femur and patella cylindrical, tibia slightly enlarged. Tarsus proper with spoon-shaped prolongation carrying a small, dentiform apophysis.



Figs. 17-21. *Panjange cavicola* nov. spec. 17, ♂, carapace, dorsal view; 18, ♀, genital organ, ventral view; 19, ♂, right palp, mesal view; 20, ♂, carapace, right chelicer and palp, lateral view; 21, ♀, lateral view. Scales 0.5 mm.

Tarsal appendage distal to the "elbow" flattened and widened, with one offshoot, apically a small, median tooth. Bulb with simple, unsclerotized embolus, the curved apophysis almost twice its length.

Female genital organ (fig. 18). — Epigyneal lip strongly wrinkled over its whole width; projection small and short, bursal opening large. Internal chitinous valves extending over the whole width of the organ.

Huber, B. A. 2011. Revision and cladistic analysis of *Pholcus* and closely related taxa (Araneae, Pholcidae). Bonner zool. Monographien 58: 1-510.

p. 109



FIG. 435. Known distribution of *Panjange*.

p. 111

Pa. cavicola
 group: *Pa. cavicola* Deeleman-Reinhold & Deeleman, 1983; *Pa. alba* Deeleman-Reinhold & Deeleman, 1983; *Pa. mirabilis* Deeleman-Reinhold, 1986; *Pa. madang* n. sp.; *Pa. dubia* (Kulczyński, 1911) n. comb.;