

***Panjange alba* Deeleman-Reinhold & Deeleman, 1983**

Deeleman-Reinhold, C. L., Deeleman, P. R. 1983. Studies on tropical Pholcidae I. *Panjange*, a new genus of Indo-Australian leaf- and rock-dwelling pholcid spiders (Araneae). Zool. Mededel. 57(14): 121-130.

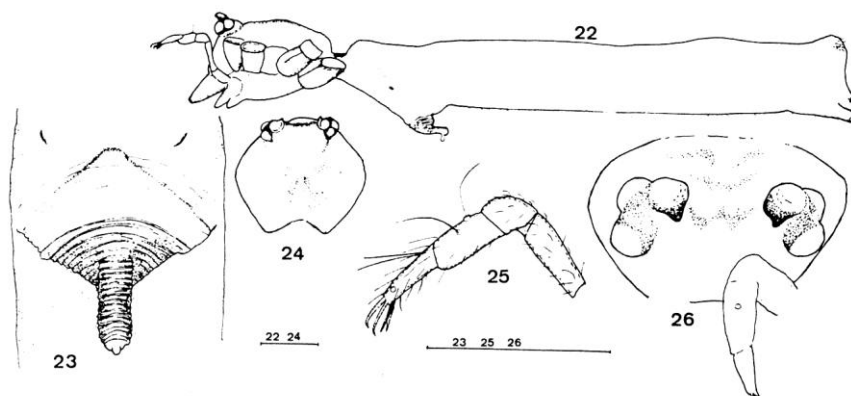
p. 129

***Panjange alba* nov. spec. (figs. 22-26)**

Material examined. — Indonesia: Sulawesi, 40 km W of Kendari, near Sampara, edge of woodland: ♀ holotype, 3 ♀ paratypes on underside of leaves of shrub; leg. P. R. Deeleman, 12.vii.1980. Holotype in RMNH, paratypes in Coll. Deeleman.

Description. — Cephalothorax, chelicerae, legs creamy white, carapace with ochre pattern (fig. 24): a narrow band connecting eye groups brownish, interrupted by a dark W-mark in the middle; abdomen white, unspotted or with 2-3 pairs of very pale round blots. Carapace in the holotype 1.13 mm long and 1.05 mm wide, flat and smooth except for grooves lateral to the eye groups (fig. 22). Distance between the eye groups 2 diameters of the PME, their mesal margin

p. 130



Figs. 22-26. *Panjange alba* nov. spec. 22, ♀, lateral view; 23, ♀, genital organ, ventral view; 24, ♀, carapace, dorsal view; 25, ♀, palp, lateral view; 26, ♂, carapace, clypeus and left palp, anterior view. Scales 0.5 mm.

with little cusps (fig. 26). Clypeus nearly vertical. Abdomen distally rectangular in profile, 3.5 times the length of the carapace.

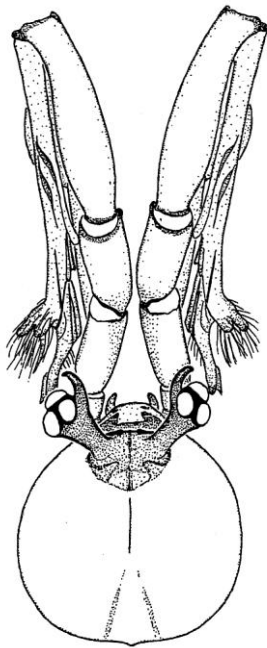
Leg measurements of the ♀ holotype (in mm):

	Fe	Pa	Ti	M	T	Total
I	9.12	0.48	8.80	17.30	2.40	38.10
II	6.00	0.46	5.30	10.08	1.20	23.04
III	4.30	0.43	3.26	5.28	0.72	13.27
IV	6.45	0.48	4.80	8.60	1.30	21.63
palp	2.10	1.37	1.40		1.70	6.57

Female genital organ (fig. 23). — Posterior part of epigyneal lip chitinized and strongly wrinkled; opening of the bursa very wide; internal chitinized valves extended across the whole width, V-shaped.

Murphy, F., Murphy J. 2000. An Introduction to the Spiders of South East Asia. Malaysian Nature Society, Kuala Lumpur. 624 pp., 32 plates.

p. 254



Fam. 47: Fig. 9 Carapace, showing the eyes on stalks and a dorsal view of the palps of a male *Panjange alba*. Specimen from Sulawesi.

Drawing by M. Roberts.

Huber, B. A. 2011. Revision and cladistic analysis of *Pholcus* and closely related taxa (Araneae, Pholcidae). Bonner zool. Monographien 58: 1-510.

p. 109



FIG. 435. Known distribution of *Panjange*.

p. 111

Pa. cavicola
group: *Pa. cavicola* Deeleman-Reinhold & Deeleman, 1983; *Pa. alba* Deeleman-Reinhold & Deeleman, 1983; *Pa. mirabilis* Deeleman-Reinhold, 1986; *Pa. madang* n. sp.; *Pa. dubia* (Kulczyński, 1911) n. comb.;

Panjange alba Deeleman-Reinhold & Deeleman, 1983

Figs. 459-463, 769, 790

Panjange alba Deeleman-Reinhold & Deeleman 1983: 129-130, figs. 22-26. Murphy & Murphy 2000: 254, fig. 47.9.

Types. Female holotype and 3♀ paratypes from Indonesia, Sulawesi, Sulawesi Tenggara, 40 km W of Kendari, near Sampara [$-3^{\circ}55'S$, $122^{\circ}18'E$], edge of woodland, on underside of leaves of shrub, 12.vii.1980 (P.R. Deeleman), in RMNH (2 paratypes examined).

Diagnosis. Distinguished from similar species with hooked processes on male eye stalks (Fig. 769) and extremely long palpal tarsus elongations (*Pa. mirabilis*, *Pa. madang*, *Pa. dubia*) by details of procursus (Figs. 459, 460; ridges very proximal, distal structures) and presence of AME.

Male (Ambon). Total body length 5.0, carapace width 1.0. Leg 1 missing, tibia 2: 6.4, tibia 3: 3.5, tibia 4: 5.2. Habitus as in *Pa. dubia* (cf. Figs. 767, 768). Carapace ochre-yellow with weak V-mark

posteriorly, ocular area and eye-stalks brown, upper part of clypeus also darkened, sternum whitish, legs pale ochre-yellow, patella area and tibia-metatarsus joints brown, abdomen ochre-gray with some indistinct darker marks dorsally and laterally, ventrally monochromous. Distance PME-PME 425 μ m, diameter PME 90 μ m, distance PME-ALE 35 μ m, distance AME-AME 55 μ m, diameter AME 10 μ m. Each triad on long stalk, each stalk with hooked process (Fig. 769) and additional small pointed projection anterior of PME, no special hairs on ocular area. No thoracic furrow; clypeus unmodified. Chelicerae as in Fig. 461, with pair of large lateral modifications, no frontal distal apophyses. Sternum wider than long (0.6/0.5), unmodified. Palps as in Figs. 459 and 460, coxa unmodified, trochanter with retrolatero-dorsal apophysis, femur cylindrical with small dorsal bulge proximally, patella and tibia cylindrical, tarsus extremely elongated dorsally, procursus long, with two distinctive ventral ridges in very proximal position, distally complex, bulb elongated with two long processes, one slightly tapering (putative embolus), the other widened distally with small hook (putative appendix). Legs without spines and curved hairs, few vertical hairs.

Variation. In male from Dumoga small projections anterior of PME absent, but palpal structures appear identical. Tibia 1 in this male: 8.8, tibia 2: 5.9, tibia 1 L/d: 99, retrolateral trichobothrium on tibia 1 at 3%; prolateral trichobothrium apparently absent on tibia 1, present on other tibiae; tarsus 1 missing. The second male from Ambon lacks both legs 1.

Female. In general similar to male but triads barely elevated, closer together (distance PME-PME 320 μ m); tibia 1 in 5 females: 7.0-8.0 (mean 7.7). Epigynum with strongly folded, weakly sclerotized scape (Fig. 462), only laterally slightly darkened (Fig. 790); internal genitalia as in Fig. 463.

Distribution. Known from Sulawesi and Ambon Island (Fig. 435). The BPBM has an unidentified female specimen from Seram Island that may also belong to this species.

Material examined. INDONESIA-SULAWESI: *Sulawesi Tenggara*: 40 km W of Kendari, near Sampara, 2♀ paratypes above. *Sulawesi Utara*: Dumoga, near Doloduo [$-0^{\circ}31'N$, $123^{\circ}55'E$], primary forest, from leaves, 27.-30.vii.1982 (C.L. & P.R. Deeleman), 1♂2♀ in RMNH.

INDONESIA-MALUKU ISLANDS: *Maluku*: Ambon Island [$-3^{\circ}40'S$, $128^{\circ}10'E$], "Hila", forest, 29.-31.i.1995 (C.L. & P.R. Deeleman), 1♂4♀ in

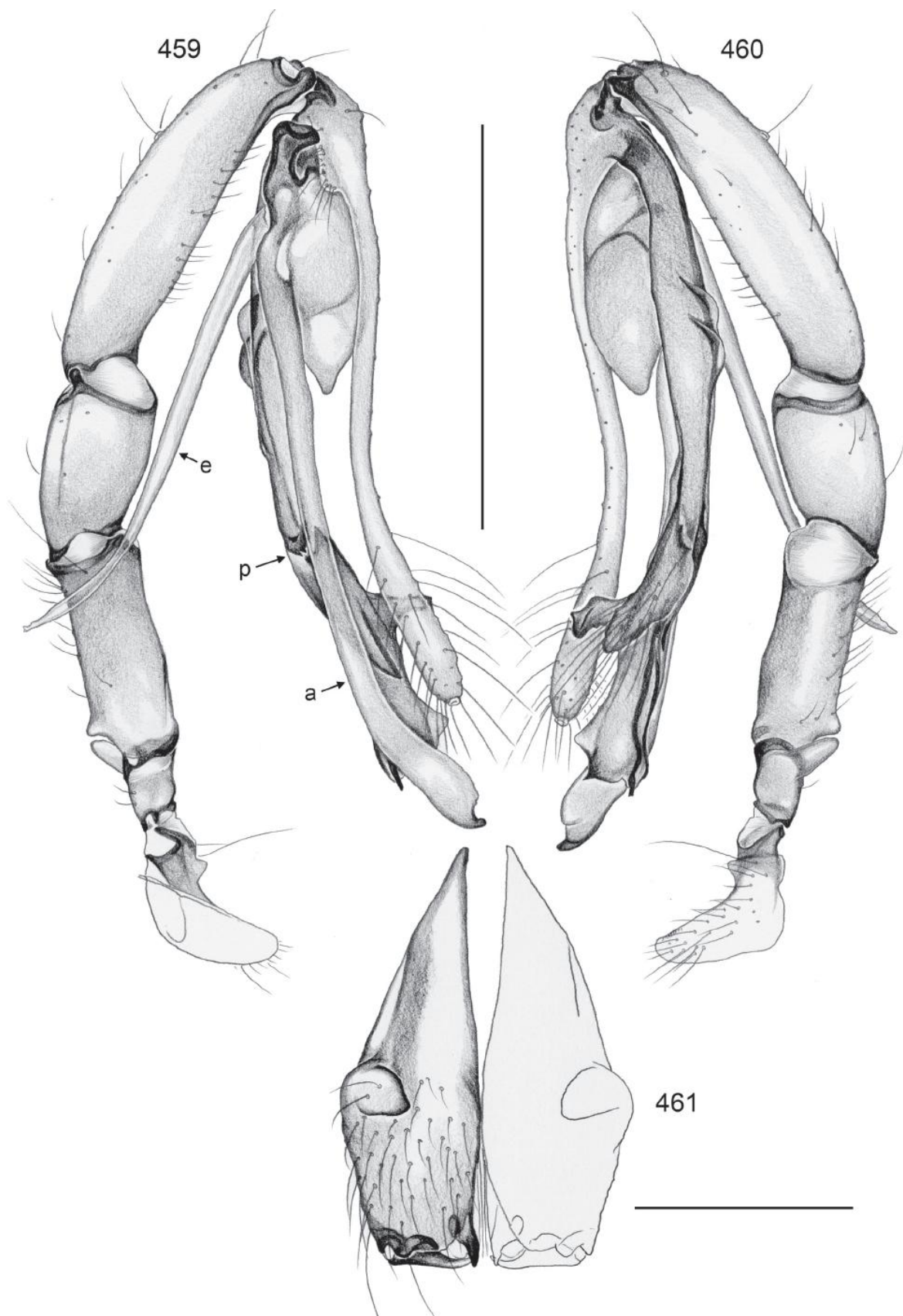
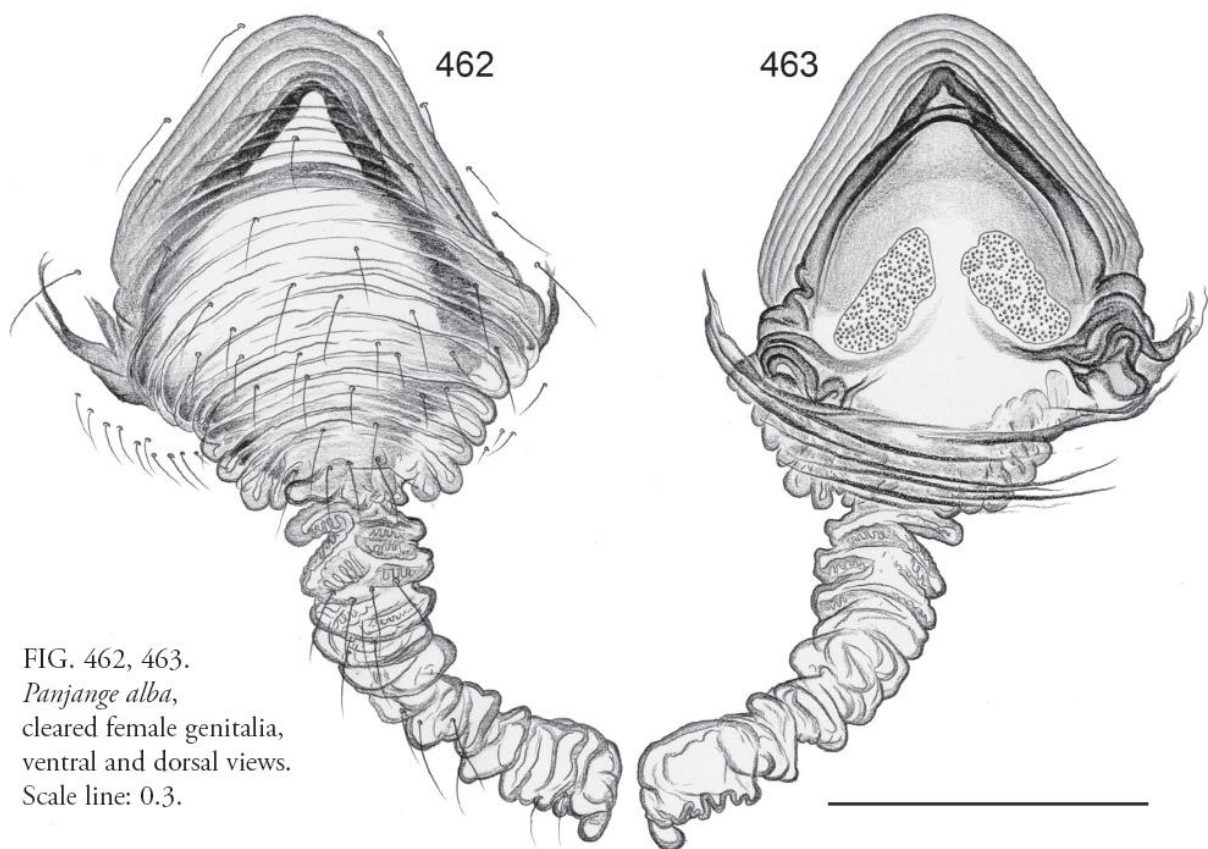


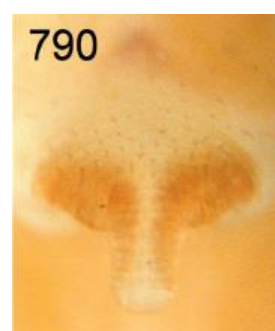
FIG. 459-461. *Panjange alba*. 459, 460. Left male palp, prolateral and retrolateral views. 461. Male chelicerae, frontal view. Scale lines: 1.0 (459, 460), 0.3 (461).



RMNH; Ambon Island, "Amahusa", trees, from leaves, 1.ii.1995 (C.L. & P.R. Deeleman), 1♂3♀ in RMNH.



769. *Pa. alba*, male prosoma, oblique view.



790. *Pa. alba*.