

***Micromerys papua* Huber, 2011**

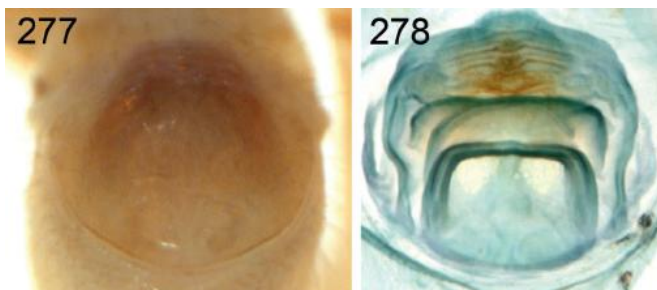
Huber, B. A. 2011. Revision and cladistic analysis of *Pholcus* and closely related taxa (Araneae, Pholcidae). Bonner zool. Monographien 58: 1-510.

p. 63



236, 237. *Mm. papua*, male, dorsal and lateral views.

p. 65



277, 278. *Mm. papua*.

p. 103

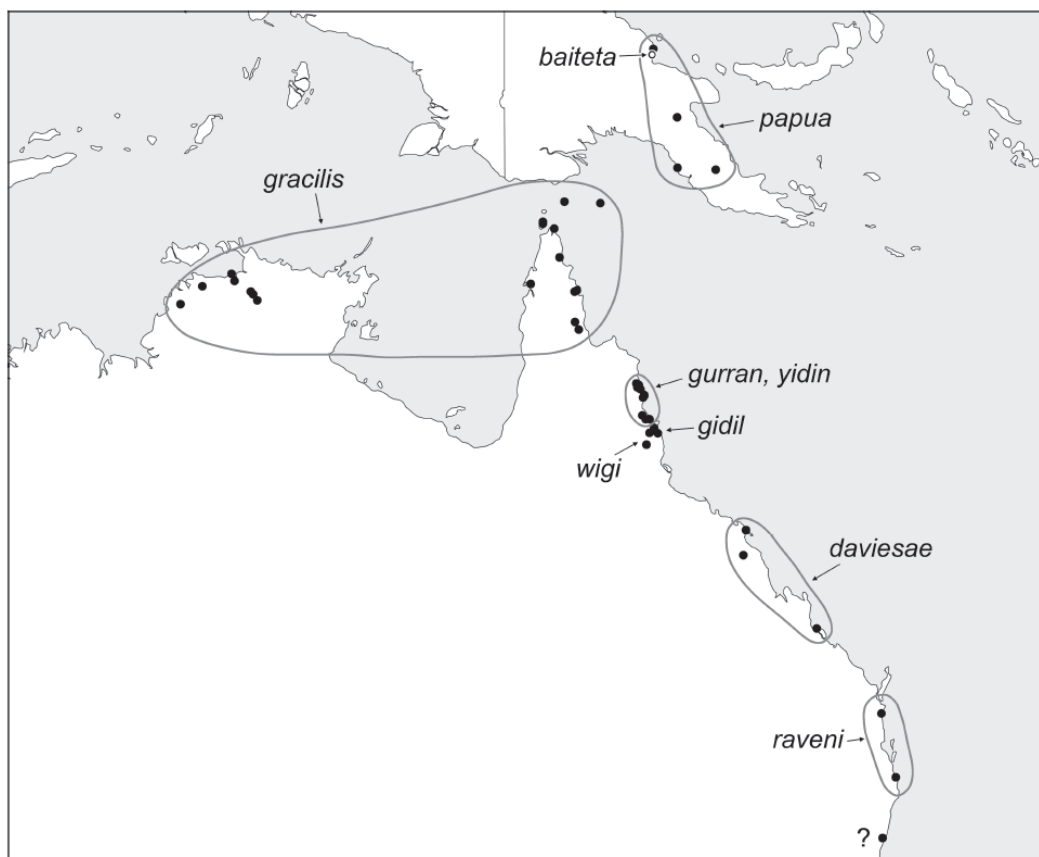


FIG. 418. Known distribution of *Micromerys*. Australian records are mostly from Huber (2001). The question mark denotes a *Mm. yidin* male that may be mislabeled (see Huber 2001).

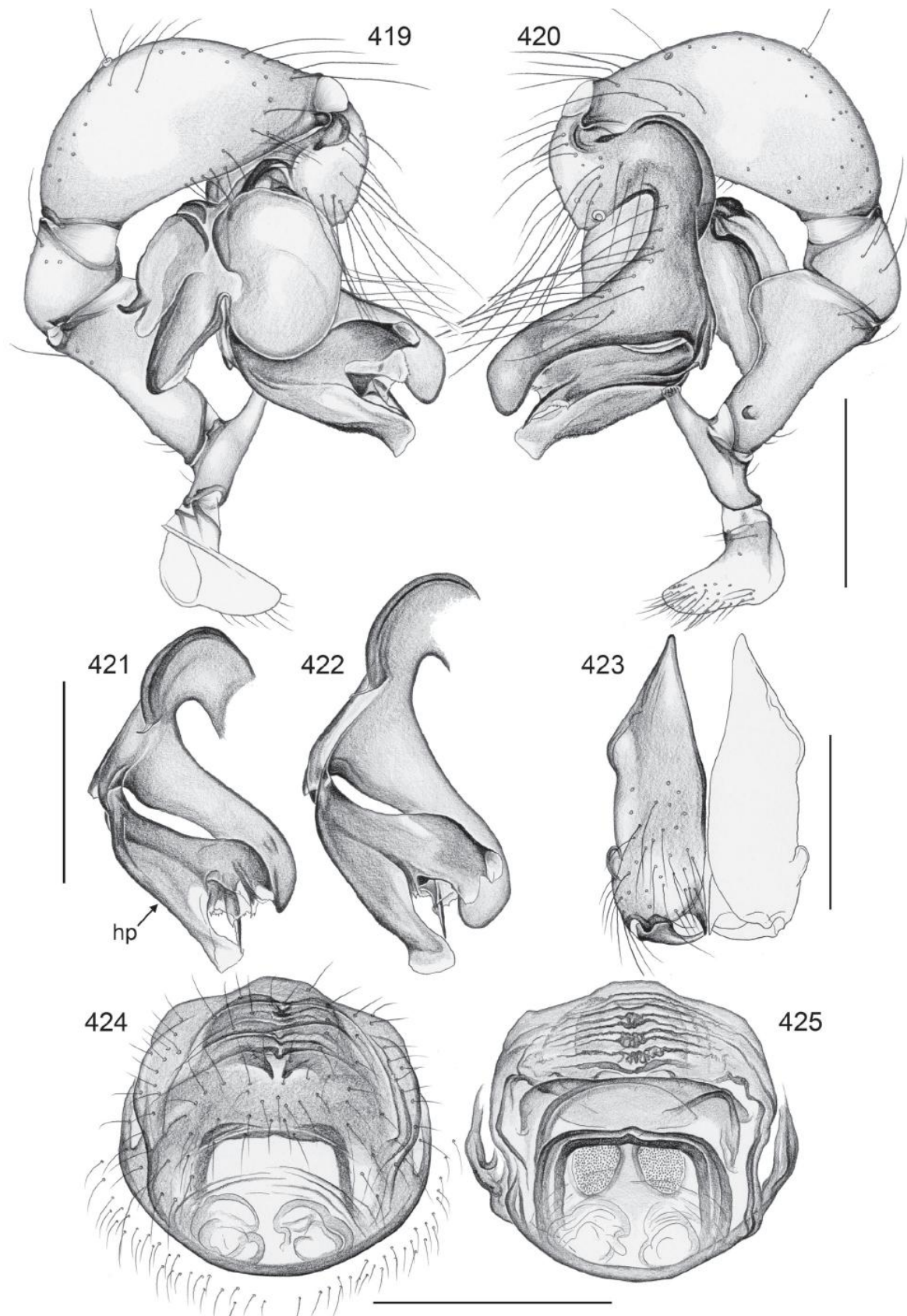


FIG. 419-425. *Micromerys papua*. 419, 420. Left male palp, prolateral and retrolateral views. 421, 422. Left procursi, prolateral views, Yule Island (421) and Baiteta (422). 423. Male chelicerae, frontal view. 424, 425. Cleared female genitalia, ventral and dorsal views. Scale lines: 0.5 (419-422, 424, 425), 0.3 (423).

Micromerys papua n. sp.

Figs. 236, 237, 277, 278, 419-425, 428, 429

Type. Male holotype from Papua New Guinea, Madang Province, Baiteta [5°01'S, 145°45'E], "canopy mission, AR64", no further data, in IRSB.

Etymology. The specific name is a noun in apposition, derived from the type locality.

Diagnosis. Distinguished from congeners by morphology of male palp (Figs. 419, 420; shapes of procurus and bulbal processes), and female internal genitalia (Figs. 278, 424, 425; shapes of pore plates and other internal structures).

Male (holotype). Total body length 7.2, carapace width 1.05. Leg 1: 9.6 + 0.5 + 8.5 + 15.0, tarsus missing, tibia 2: 6.6, tibia 3: 4.1, tibia 4: 7.8, tibia 2/4: 0.85, tibia 1L/d: 96. Habitus as in Figs. 236 and 237. Carapace ochre-yellow, ocular area and clypeus light brown, sternum ochre-yellow, legs pale ochre-yellow with brown patella area and tibia-metatarsus joints, abdomen monochromous whitish ochre. Distance PME-PME 400 μ m, diameter PME 95 μ m, distance PME-ALE 45 μ m, no AME (some irregular pigment but no lenses). Ocular area barely elevated, each triad on low hump. No thoracic furrow; clypeus unmodified. Chelicerae as in Fig. 423, with pair of lateral apophyses very distally. Sternum about as wide as long (0.65), unmodified. Palps as in Figs. 419 and 420, coxa unmodified, trochanter with long ventral apophysis with fine distal ridges, femur proximally slender with retrolateral apophysis, distally with large ventral protrusion, procurus without spines, with complex hinged ventral process (Fig.

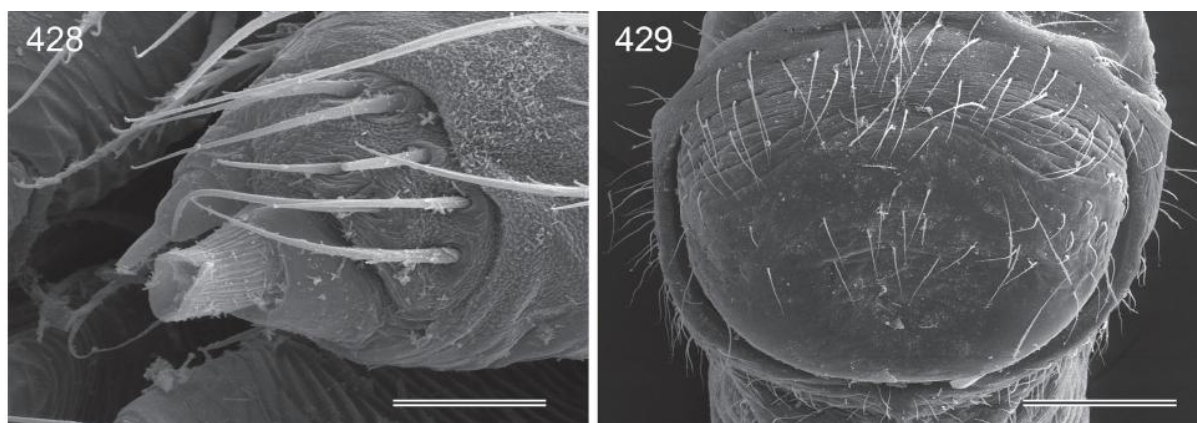


FIG. 426-429.

Micromerys papua (428, 429).

428. Female ALS. 429. Epigynum. Scale lines: 200 μ m (429), 30 μ m (427), 20 μ m (428), 10 μ m (426).

422), bulb with two processes of uncertain homology. Legs without spines and curved hairs, few vertical hairs. Retrolateral trichobothrium on tibia 1 at 2%; prolateral trichobothrium absent on tibia 1, present on other tibiae; pseudosegments not seen.

Variation. Some specimens appear generally artificially darkened; some with indistinct darker marks dorsally on abdomen. AME pigment absent to quite distinct, but apparently never with lenses. Tibia 1 in two other males: 8.3, 8.1. The males from Mt. Kainoi and from Yule Island differ slightly in the shape of the procursus (Fig. 421) and both bulbal processes are slightly shorter; they are therefore assigned tentatively; tibia 1: 7.1.

Female. In general similar to male but triads slightly closer together (distance PME-PME 355 μ m); some females with darker marks prolaterally and retrolaterally on anterior femora (1 and 2). Tibia 1 in 4 females: 7.0-7.5. Epigynum very simple externally (Fig. 429), slightly protruding, weakly sclerotized internal arc visible through cuticle anteriorly (Figs. 277, 424); internal genitalia as in Figs. 278 and 425. Tibia 1 in the 3 females from Yule Island: 6.1 (all same length); in female from Northern Prov.: 6.5. ALS with only two spigots each (Fig. 428).

Distribution. Known from Madang, Morobe, Central and Northern Provinces, Papua New Guinea (Fig. 418).

Material examined. PAPUA NEW GUINEA: *Madang Province:* Baiteta: ♂ holotype above; same locality, 7♂14♀ (14 vials in IRSB ("AR2", "AR5", "AR7", "AR25-14", "AR 28", "AR49-12", "AR54", "AR62", "AR60", "T1", "T5", "T9").

Assigned tentatively. PAPUA NEW GUINEA: *Morobe:* Mt. Kainoi [$-7^{\circ}27'S$, $146^{\circ}40'E$], 2300 m a.s.l., 1.i.1965 (J.L. Gressitt), 1♂ in BPBM. *Central Province:* Yule Island, Bereina [$-8^{\circ}48.8'S$, $146^{\circ}31.8'E$], 9.iii.1986 (D.J. Court), 1♂2♀ in RMNH; same locality, 18.viii.1985 (D.J. Court), 1♀ in RMNH. *Northern (=Oro) Prov.:* Iora Creek [$8^{\circ}52'S$, $147^{\circ}45'E$], in forest adjacent Myola Guest House, 2080 m a.s.l., 1.vii.1987 (D.J. Court), 1♀ in RMNH.