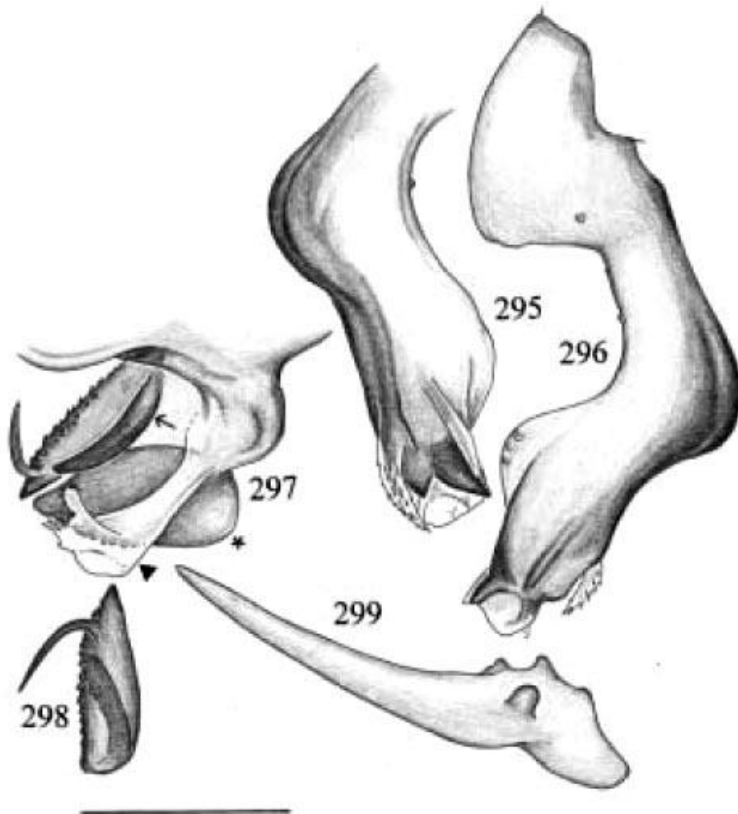


***Leptopholcus jamaica* Huber, 2000**

**Huber, B. A. 2000.** New World pholcid spiders (Araneae: Pholcidae): a revision at generic level. Bull. Amer. Mus. Nat. Hist. 254: 1-348.

p. 78



Figs. 291–305. *Leptopholcus* spp. from the Antilles, male diagnostic characters.

295–299. *L. jamaica*, n. sp. 295. Left procurus, prolateral view. 296. Left procurus, retrolateral view. 297. Bulbal projections (left bulb). 298. Bulbal “appendix.” 299. Palpal trochanter.

line for all drawings: 0.2 mm.

Scale

*Leptopholcus jamaica*, new species

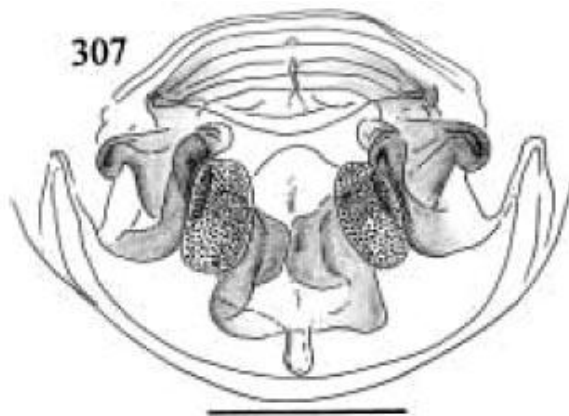
Figures 294–299, 307

TYPE: Male holotype from Askenish, Trail to Dolphin Head, Hanover Prov., Jamaica; June 24, 1954 (A. M. Chickering), in MCZ.

ETYMOLOGY: Named for the Island of Jamaica. The specific name is a noun in apposition.

DIAGNOSIS: Easily distinguished from the other Caribbean species by the long apophysis originating from the bulbal appendix (arrow with shaft in fig. 297); also by the tip of the appendix projecting over the spine (fig. 298), and the very long, almost straight palpal trochanter apophysis (fig. 299).

MALE (holotype): Total length 4.8, carapace width 0.84; leg 1: (8.5+0.4+8.1+16.1, tarsus missing), tibia 2: 5.6, tibia 3: 3.3, tibia 4: 5.5; tibia 1 l/d: 102. Habitus exactly as in other Caribbean *Leptopholcus* (cf. figs. 22a–b in Huber, 1997a). Carapace ochre-yellow, ocular area with large brown, about triangular mark; AME as in *L. delicatulus* (small, but with lenses); distance PME–ALE about 15% of PME diameter. Sternum whitish; chelicerae ochre-yellow, with apophyses as in *L. dalei* and *L. delicatulus* (cf. fig. 24 in Huber, 1997a; fig. 11 in Huber and Pérez González, 1998). Palps ochre-yellow, trochanter apophysis very long: 0.36–0.37 mm in three males; procursus brown ventrally and distally, with distinct distal apophyses and laminae (figs. 295–296); bulb whitish with black apophyses, with distinctive apophysis originating from basis of appendix (arrow with shaft in fig. 297). Legs light ochre-yellow, with light brown patellae and tibia-metatarsus joints; apparently without spines, without curved and vertical hairs; retrolateral trichobothrium of tibia 1 at 4.5%. Opisthosoma ochre-yellow, with some very faint darker spots dorsally.



Figs. 306–309. *Leptopholcus* spp. from the Antilles, female internal genitalia, dorsal views.  
307. *L. jamaica*, n. sp.

Scale lines: 0.2 mm.

VARIATION: Tibia 1 in two other males:  
7.0, 8.0.

FEMALE (Hermitage Reservoir): Tibia 1:  
5.9. In general very similar to male, but without brown mark on ocular area. Internal genitalia as in fig. 307.

DISTRIBUTION: Known only from Jamaica.

MATERIAL EXAMINED: JAMAICA: *Hanover*: type above, with 1 juvenile; *St. Andrew*: Hermitage Reservoir, Feb. 5, 1957 (A. M. Chickering), 1♂ 1♀ in MCZ; “Grove Place,” July 15, 1960 (Vauries), 1♂ in AMNH.