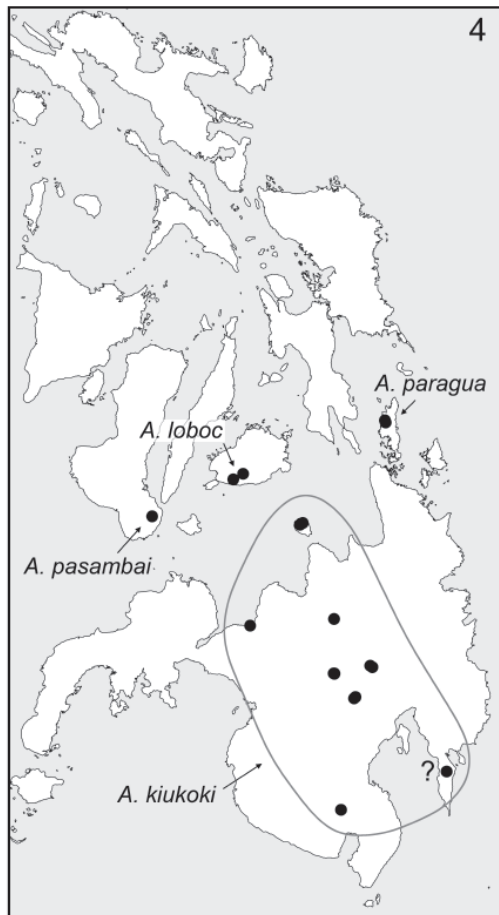


***Aetana pasambai* Huber, 2015**

**Huber BA, Nuñeza OM, Leh Moi Ung C. 2015.** Revision, phylogeny, and microhabitat shifts in the Southeast Asian spider genus *Aetana* (Araneae, Pholcidae). *European Journal of Taxonomy* 162: 1-78.

p. 7



**Figs 3–4.** Known distributions of the *Aetana ocampoi* (3) and *A. kiukoki* (4) groups. The question mark denotes a female specimen assigned tentatively to *A. kiukoki*.

*Aetana pasambai* Huber, sp. nov.

[urn:lsid:zoobank.org:act:041DF955-4589-4503-AF5D-1EC15C107E8E](http://urn:lsid:zoobank.org:act:041DF955-4589-4503-AF5D-1EC15C107E8E)

Figs 96–98

### Diagnosis

Distinguished from closest known relative (*A. loboc* Huber, sp. nov.) by distinctive modification of male clypeus (Fig. 96; shorter and wider), by median process between eye stalks smaller and in more frontal position (Fig. 96), by shorter male palpal tibia and procursus (Fig. 98), and by smaller ventral apophysis on male palpal femur (female of *A. pasambai* Huber, sp. nov. unknown); from other close relatives (*A. paragua* sp. nov., *A. kiukoki* Huber, sp. nov.) by modifications of male palpal femur (two processes instead of one), and by presence of median process between eye stalks.

### Etymology

Named for Philippine-born cellist Wilfredo Pasamba.

### Material examined

#### Holotype

PHILIPPINES: ♂, Negros Isl., Negros Oriental Prov., Casaroro Falls (9.281° N, 123.208° E), 550 m a.s.l., forest along river below waterfall, 10 Mar. 2014 (B.A. Huber), ZFMK (Ar 13960).

#### Other material

None.

### Description

#### Male (holotype)

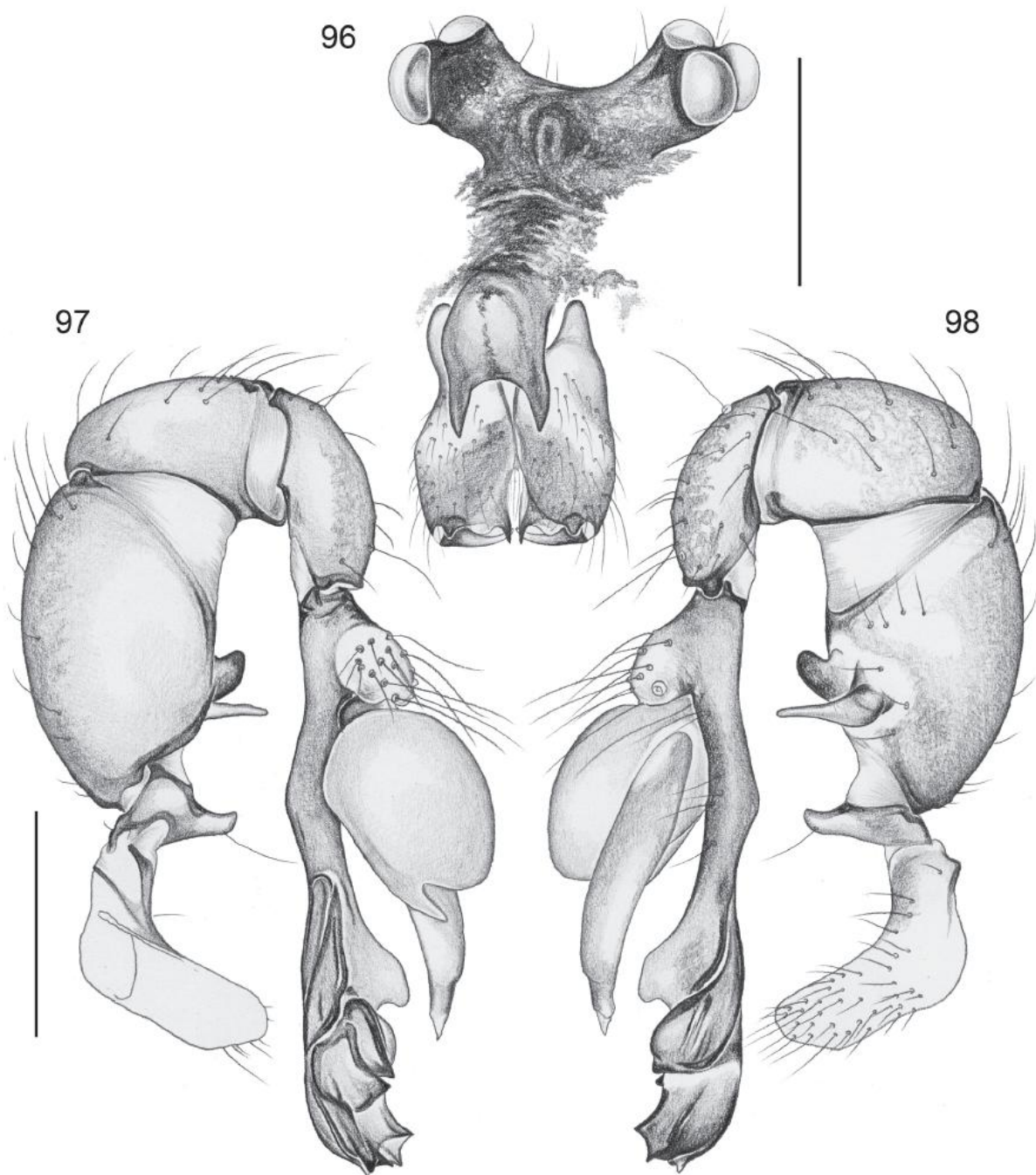
MEASUREMENTS. Total body length 3.3, carapace width 1.1. Leg 1: 32.7 (7.7 + 0.5 + 7.7 + 14.1 + 2.7), tibia 2: 4.7, tibia 3: 3.7, tibia 4: 5.0; tibia 1 L/d: 69. Distance PME-PME 385 µm, diameter PME 135×120 µm, distance PME-ALE ~35 µm; AME absent.

COLOR. Carapace ochre-yellow with narrow lateral marginal bands and wide dark brown median band including ocular area and clypeus; sternum with pair of wide brown bands converging posteriorly, with darker triangular mark posteriorly, labium proximally not dark brown; legs greenish ochre, with indistinct darker rings on femora (subdistally, with light tip), and tibiae (proximally and subdistally, the latter followed by light tip); abdomen ochre-gray, dorsally and laterally covered with many black marks, with some white marks, ventrally with dark band behind gonopore and very indistinct mark in front of spinnerets.

BODY. Habitus as in *A. loboc* Huber, sp. nov. (*cf.* Fig. 55); ocular area raised, each triad on short stalk directed toward lateral, with small median process in frontal position (Fig. 96); carapace with very shallow median furrow in anterior part only; clypeus with large distinctive process (Fig. 96), protruding in upper part, with distinctive pair of distal apophyses; sternum wider than long (0.80/0.55), unmodified.

CHELICERAE. As in Fig. 96, with pair of dark lateral apophyses proximally, without lateral humps more distally; without modified hairs; without stridulatory ridges.

PALPS. As in Figs 97–98; very similar to *A. loboc* Huber, sp. nov., but femur apophyses of different sizes and positions, tibia and procurus shorter.



**Figs 96–98.** *Aetana pasambai* Huber, sp. nov. 96. Male prosoma, oblique frontal view. 97–98. Left male palp, prolateral and retrolateral views. Scale lines: 0.5 mm.

LEGS. Without spines; with curved hairs on tibiae and metatarsi 1–2; few vertical hairs; retrolateral trichobothrium on tibia 1 at 2%; prolateral trichobothrium absent on tibia 1, present on other tibiae; tarsus 1 with ~25 pseudosegments, only distally distinct.

**Female**

Unknown

**Natural history**

The specimen was found in a small hole in the ground.

**Distribution**

Known from type locality on Negros Island only (Fig. 4).